



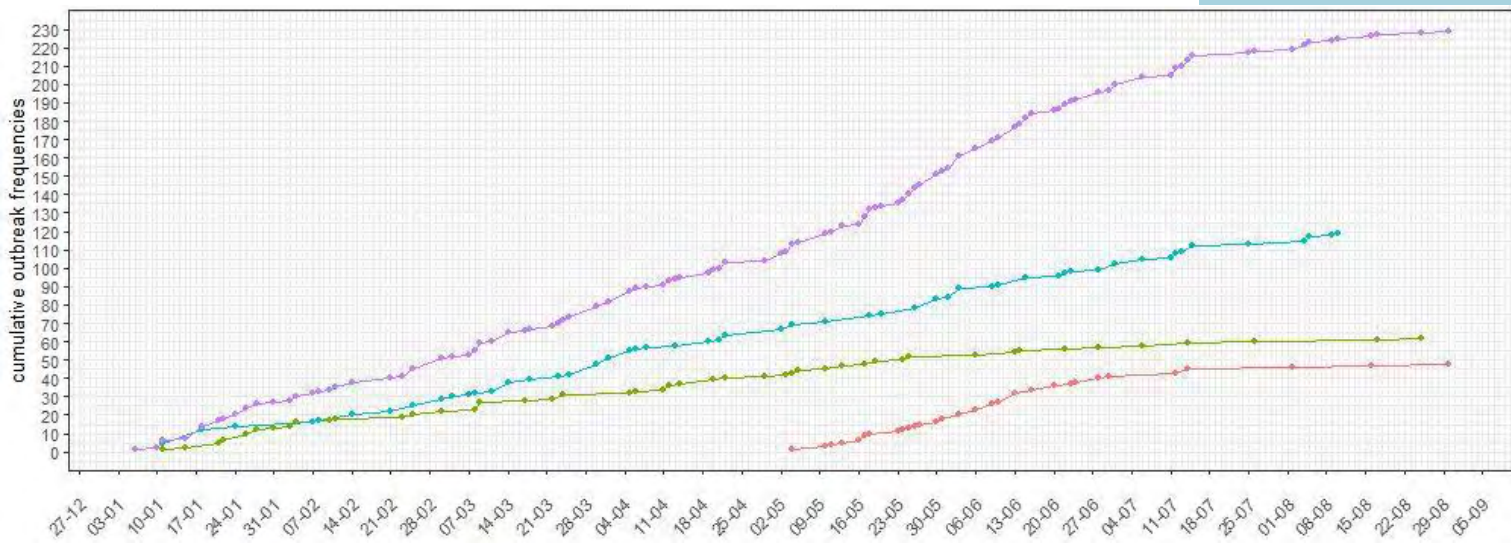
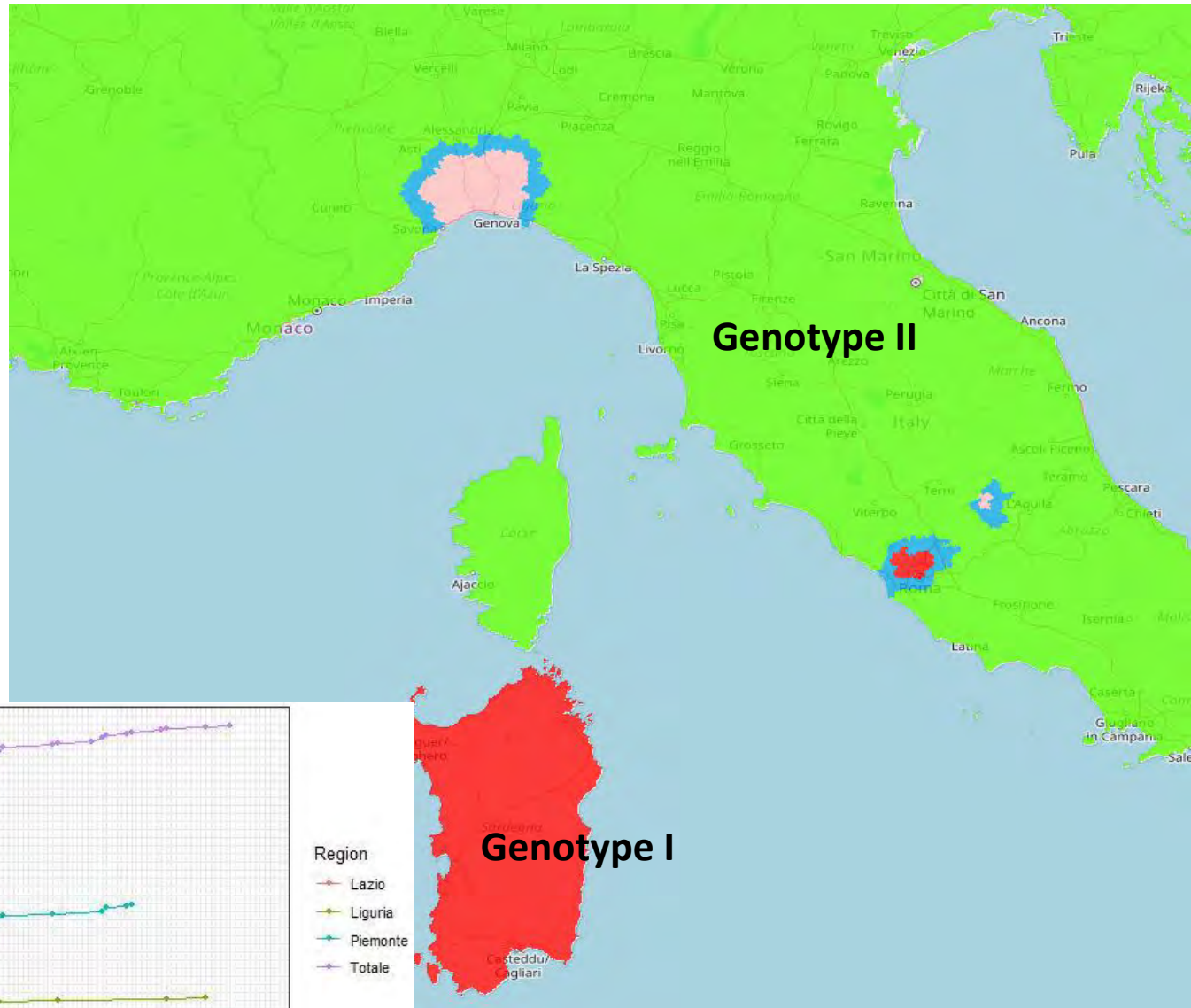
*Ministero della Salute*

# ASF situation in Italy

**Directorate General for Animal  
Health and veterinary medicinal  
products**

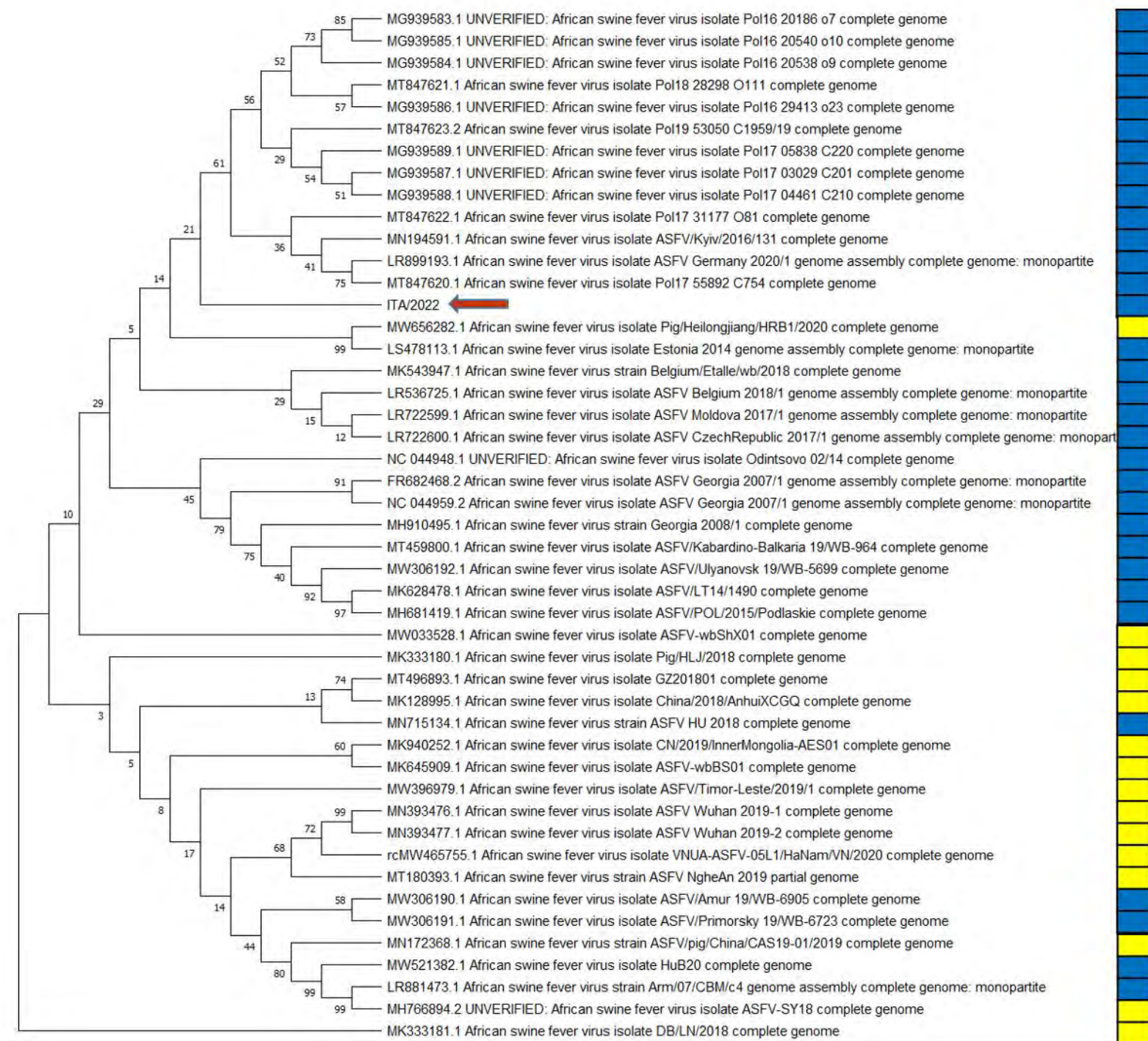


# ASF situation in Italy



The two Italian clusters show some little sequence differences, demonstrating different origin

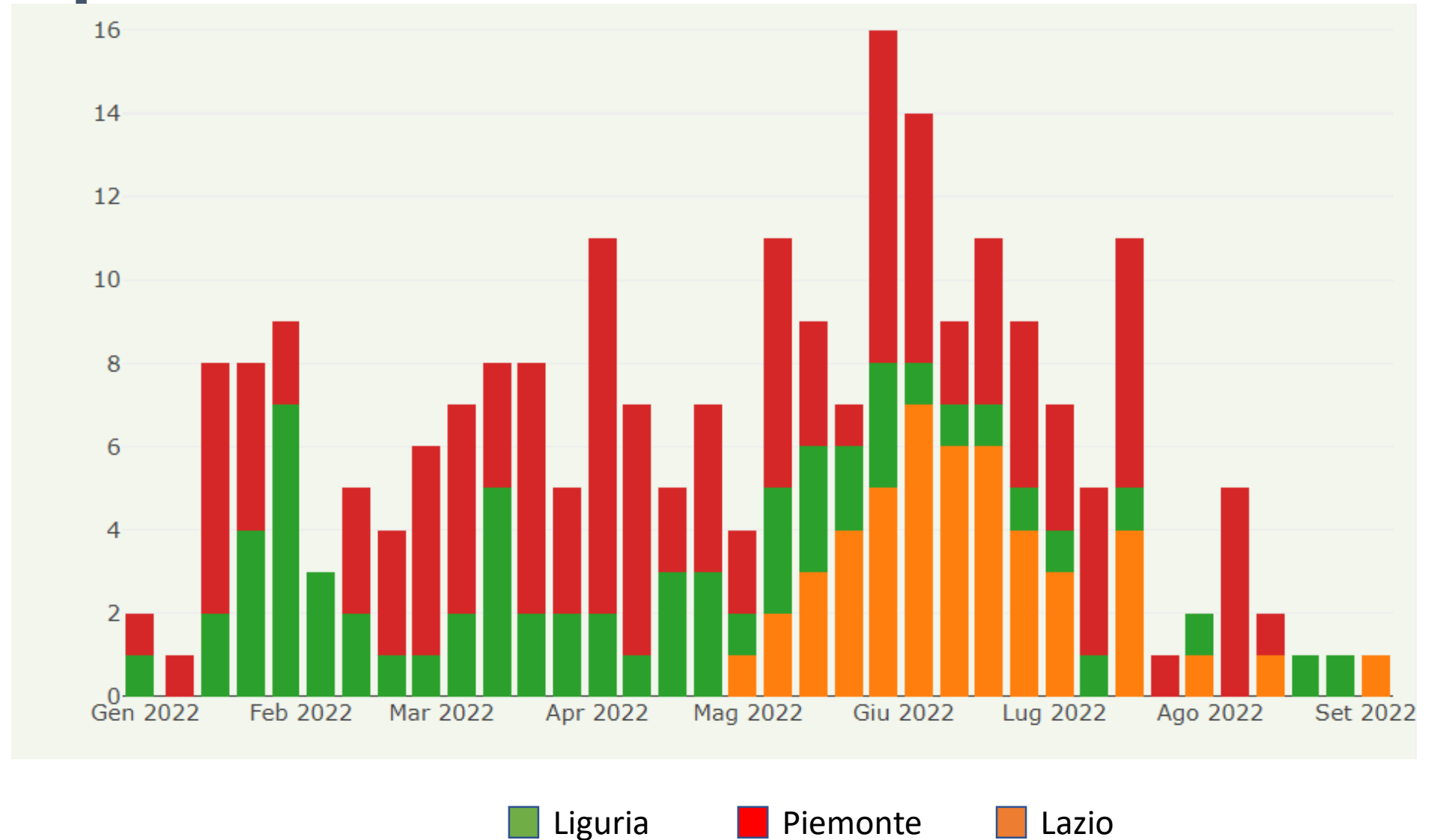
The viruses circulating in Italy don't show peculiar sequence differences able to define the origin



Europa	Asia
--------	------

# Weekly report

From August 'till these days we are assisting to a decrease of positivity rate



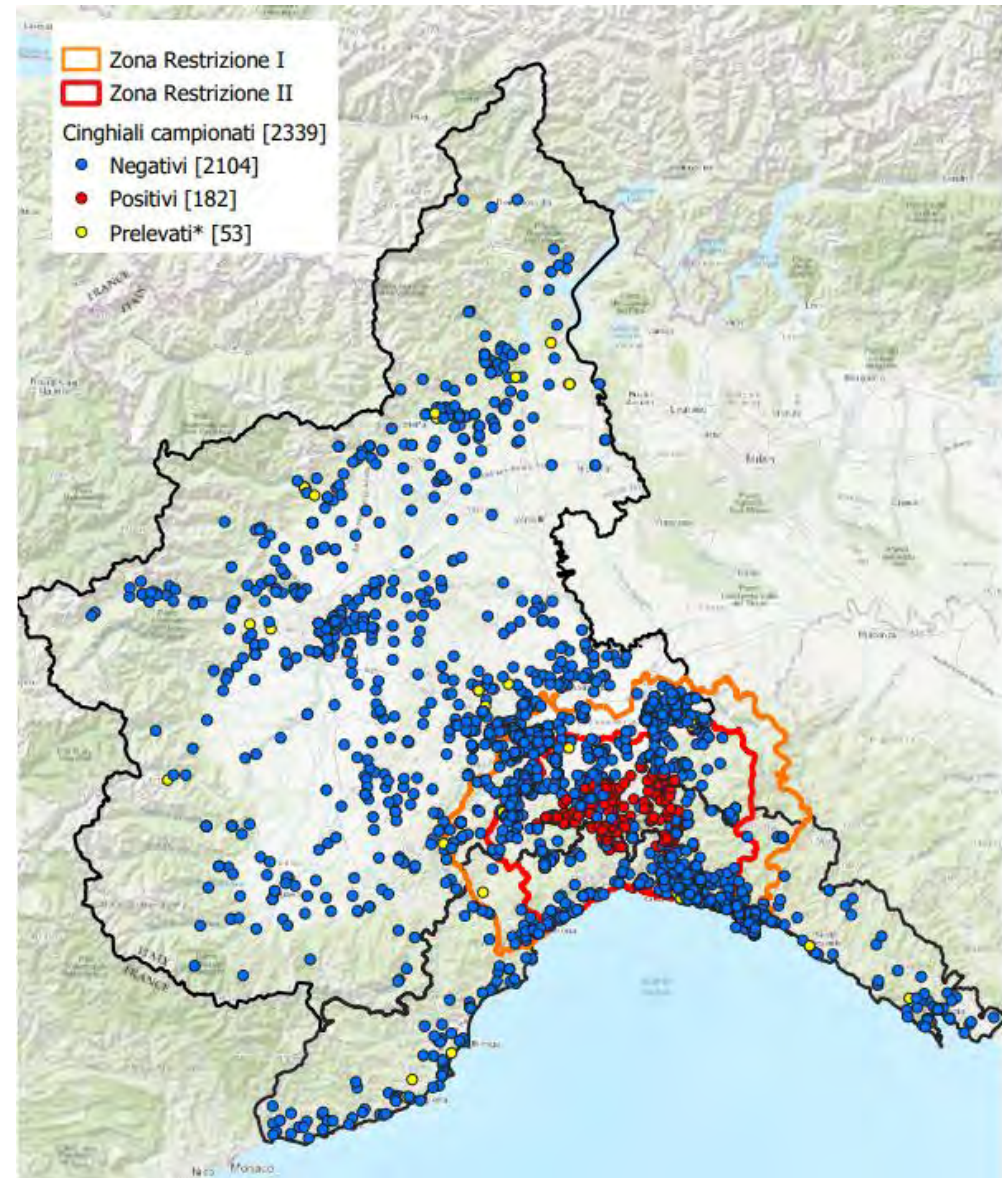
# Piedmont and Liguria: cases in wild boars at 12/09/2022

Samples in Piedmont: 1471

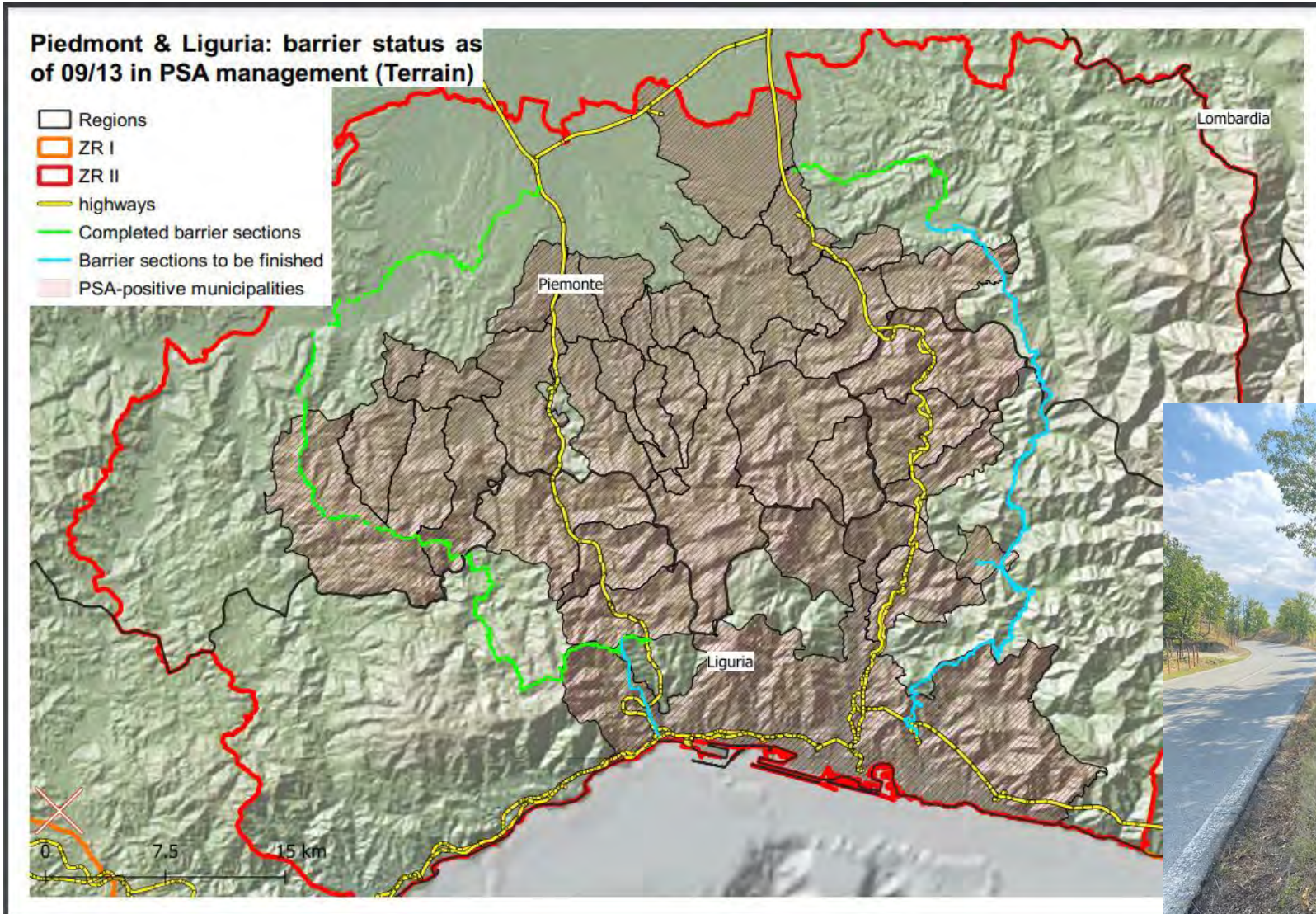
Positives in Piedmont: 119

Samples in Liguria: 868

Positives in Liguria: 63



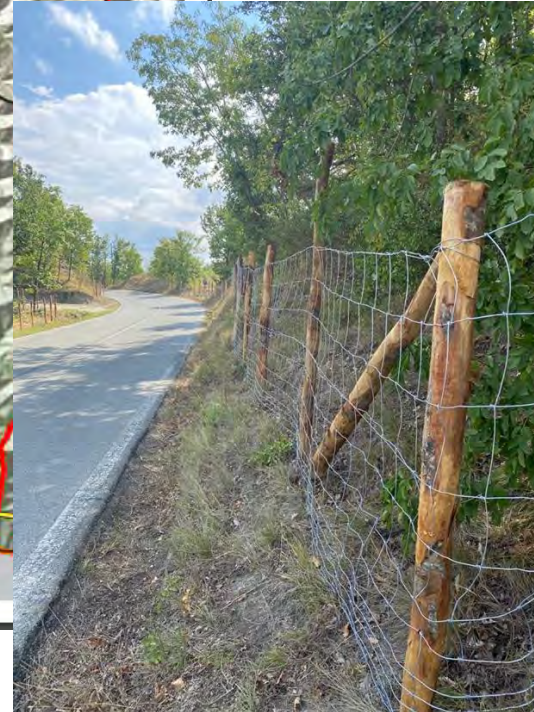
# Fences status



Due to the increased price of the materials, the Government is allocating additional funds in order to complete the project.

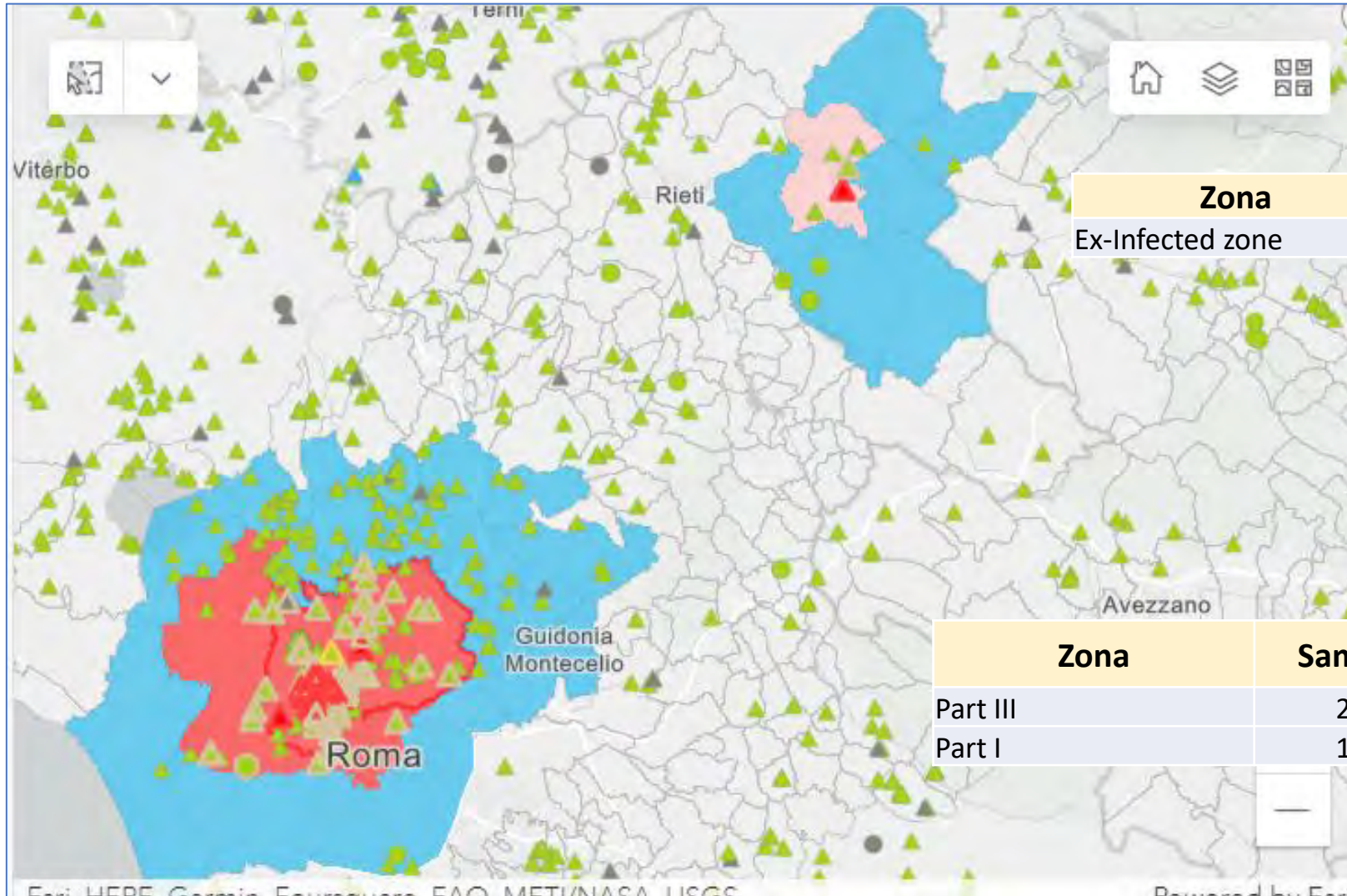
The installation is completed in the highest risk area (North-west and west)

All highways fences are reinforced  
Unfortunately we are assisting at vandal acts



# ASF in Lazio

Implementing Regulation (UE)  
2022/1460 amending Annex I of  
Implementing Regulation (EU)  
2021/605  
2 September 2022



Zona	Samples	Positives	Negatives	Ongoing
Ex-Infected zone	8	1	7	0

Zona	Samples	Positives	Negatives	Ongoing
Part III	291	47	244	0
Part I	123	0	120	3

# Next steps

- Piedmont and Liguria: Regions are implementing the Eradication Plan
- Lazio is going to finalize the Eradication Plan
  - Rieti: will apply an exit strategy to demonstrate the free status by passive and active surveillance
  - Rome: will evaluate the conditions to request to Commission the decrease of restriction zone from Part III to Part II





REGIONE AUTÓNOMA DE SARDIGNA  
REGIONE AUTONOMA DELLA SARDEGNA

PRESIDENTZIA

PRESIDENZA

Short report on the actions implemented in response to the recommendations of the audit held in Sardinia from 9 to 19 November 2021 according to the tentative timeline to revise the African swine fever (ASF) restriction measures in Sardinia (June 2022 – January/February 2023)

# August 2022

# Recomandation 1

- *To take action to improve compliance with the requirements on identification and registration of pigs and the ones for keeping free-range pigs, in particular as regards: adequate keeping of records in the holding registers of all new-born of pigs and their notification to the competent authority, and the prohibition on keeping pigs outside registered semi-enclosed or enclosed premises.*
- Updates: Currently, the Phase 1 is in place and data about new-born pigs are monthly reported in the DWH. At the end of August 2022, a total of 11,264 farms provided data about new-born piglets. Of these data, the 79% (8,622) arise from certified farms, and the 21% (2,228) from controlled farms. **To date, a total of 57,604 of sows are recorded in these farms. The number of new-borns observed (502,387) were about the 87% of those expected (576,040).**

# Census total data

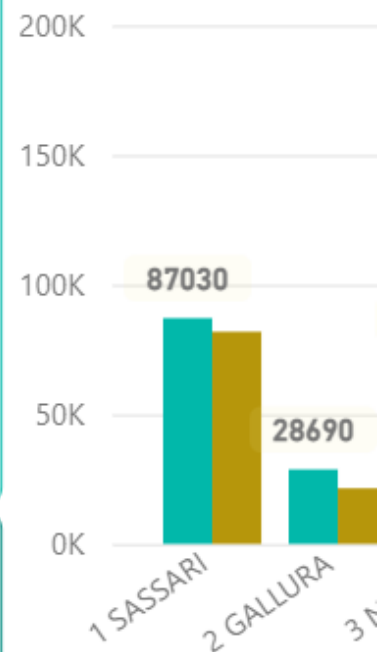
ASL	N° Allevamenti al 31-Dic	N° Allevamenti	SCROFE	SCROFETTE	DATO ATTESO	NASCITE	% NASCITE SU ATTESO
1 SASSARI	2561	2352	8703	4	87030	81789	93,98%
2 GALLURA	1227	1069	2869	181	28690	21425	74,68%
3 NUORO	2331	1414	7117	987	71170	47843	67,22%
4 OGLIASTRA	1034	671	2808	229	28080	18588	66,20%
5 ORISTANO	2456	2356	7780	670	77800	59528	76,51%
6 MEDIO CAMPIDANO	747	722	7891	891	78910	153338	194,32%
7 SULCIS	494	464	2067	46	20670	14596	70,61%
8 CAGLIARI	2498	2216	18677	960	186770	106619	57,09%
<b>Totale</b>	<b>13348</b>	<b>11264</b>	<b>57912</b>	<b>3968</b>	<b>579120</b>	<b>503726</b>	<b>86,98%</b>

% NASCITE/ATTESO

**86,98%**

Qualifiche sanitarie

● DATO ATTESO ● NASCITE



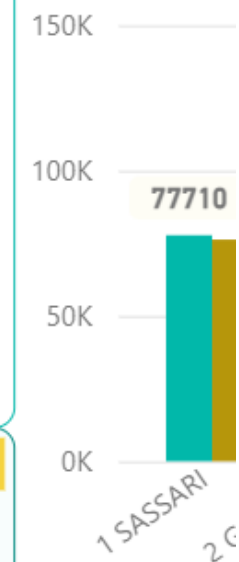
# Certified farms

Tutte  Tutte  Tutte  31/03/2022

ASL	N° Allevamenti al 31-Dic	N° Allevamenti	SCROFE	SCROFETTE	DATO ATTESO	NASCITE	% NASCITE SU ATTESO
1 SASSARI	2561	2033	7771	4	77710	76214	98,07%
2 GALLURA	1227	695	2176	152	21760	18752	86,18%
3 NUORO	2331	925	5171	719	51710	42361	81,92%
4 OGLIASTRA	1034	505	2443	212	24430	17059	69,83%
5 ORISTANO	2456	2063	7327	629	73270	57873	78,99%
6 MEDIO CAMPIDANO	747	702	7772	889	77720	152811	196,62%
7 SULCIS	494	391	1610	46	16100	13910	86,40%
8 CAGLIARI	2498	1308	14954	781	149540	97352	65,10%
<b>Totale</b>	<b>13348</b>	<b>8622</b>	<b>49224</b>	<b>3432</b>	<b>492240</b>	<b>476332</b>	<b>96,77%</b>

Qualifiche sanitarie

● DATO ATTESO



% NASCITE/ATTESO

96,77%

Table 1 shows the progressive implementation of the data in certified and controlled farms during 2021 and 2022:

Census	Report	Certified farms			Controlled farms		
		sows	newborn	%	sows	newborn	%
31/03/21	June '22	48,169	403,271	83.72	8,527	23,063	27.05
31/03/22	June '22	46,875	463,168	98.81	6,538	21,204	32.43
31/03/22	July '22	48,386	473,165	97.79	7,760	24,812	31.97
31/03/22	August '22	49,224	476,332	96.77	8,380	26,055	31.09

# Recommendation 2 *To ensure that holdings with seropositive pigs are considered as confirmed ASF outbreaks and notified to the Commission and Member States*

Updates: the two 2022 seropositive outbreaks related to a holding (Talana) and one freeranging pig (Sarule) were notified as outbreaks in SIMAN, according to the relevant legislation. The control activities in protection zone (3km) and clinical checks in surveillance zone (10 km) related to the outbreak n. 2022/144 have been completed, all samples (>600) ASF tested were negative and the outbreak has been closed in SIMAN.

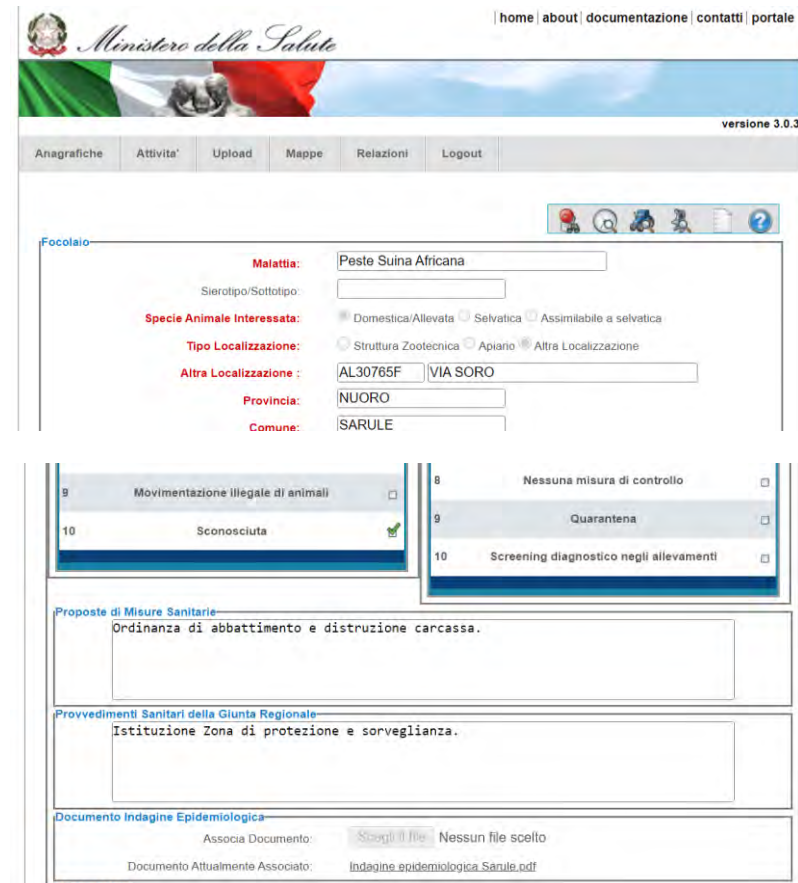
Table 2 summarized the data reported in DWH regards the last four ASF outbreaks:

N. outbreak (SIMAN)	Location code	Specie	Municipality	Data of suspicion	Data of confirmation	Data of extinction	Cases
2022/144	AL30765F	pigs	Sarule	24/05/2022	24/05/2022	24/08/2022	1
2022/31	016OG194	pigs	Talana	28/01/2022	28/01/2022	20/04/2022	2
2021/16	AL27881E	pigs	Desulo	21/12/2021	28/12/2021	23/05/2022	1
2021/12	AL27401E	pigs	Talana	26/11/2021	14/12/2021	20/04/2022	4

# Recommendation 3

To carry out effective epidemiological investigations in cases where ASF is confirmed, ensuring that they provide accurate and timely conclusions on the possible origin of the disease and the likely duration of its presence in the affected holding

Updates: The epidemiological investigation associated to the last outbreak n. AL30765F is reported in SIMAN



home | about | documentazione | contatti | portale

Ministero della Salute

versione 3.0.3

Anagrafiche | Attività | Upload | Mappe | Relazioni | Logout

Focolaio

Malattia: Peste Suina Africana

Sierotipo/Sottotipo:

Specie Animale Interessata:  Domestica/Allevata  Selvatica  Assimilabile a selvatica

Tipo Localizzazione:  Struttura Zootecnica  Apriario  Altra Localizzazione

Altra Localizzazione: AL30765F VIA SORO

Provincia: NUORO

Comune: SARULE

9.  Movimentazione illegale di animali

10.  Sconosciuta

8.  Nessuna misura di controllo

9.  Quarantena

10.  Screening diagnostico negli allevamenti

Proposte di Misure Sanitarie

Ordinanza di abbattimento e distruzione carcassa.

Provvedimenti Sanitari della Giunta Regionale

Istituzione Zona di protezione e sorveglianza.

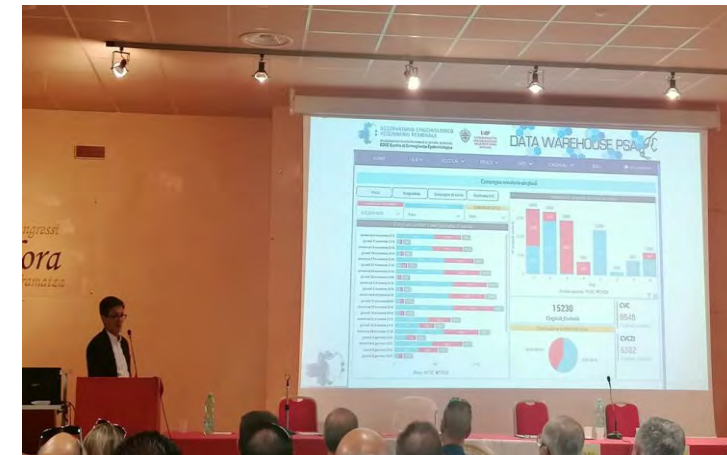
Documento Indagine Epidemiologica

Associa Documento: Scegli il file Nessun file scelto

Documento Attualmente Associato: Indagine epidemiologica\_Sarule.pdf

Table 3 shows the details on specific training courses planned.

<b>DATE</b>	<b>audience</b>	<b>program</b>
27.04.2022	Vet services RAS	ASF updates, 2 provision UDP e related activities
22.06.2022	Vet services RAS	ASF updates, 2 provision UDP e related activities
20/07/2022	UDP; stakeholders	ASF update
07.2022	ASL 1; ASL 2; ASL 3; ASL5	ASF national updates (on genotype 2), 2 provision UDP e related activities, 4 provision UDP e related activities, exit strategy and eradication measures, early detection and risk of genotype 2 introduction
27.08.2022	UDP, stakeholders	New hunting season management, wild boar passive surveillance
09.2022	ASL 4; ASL 6; ASL 7; ASL 8	ASF national updates (on genotype 2), 2 provision UDP e related activities, 4 provision UDP e related activities, exit strategy and eradication measures, early detection and risk of genotype 2 introduction
13.09.2022	Hunters of the north infected area	4 provision UDP e related activities, wild boar passive surveillance
15.09.2022	Hunters of the south infected area	4 provision UDP e related activities, wild boar passive surveillance
22.09.2022	Hunters of the north infected area	4 provision UDP e related activities, wild boar passive surveillance
4.10.2022	Hunters of the south infected area	4 provision UDP e related activities, wild boar passive surveillance



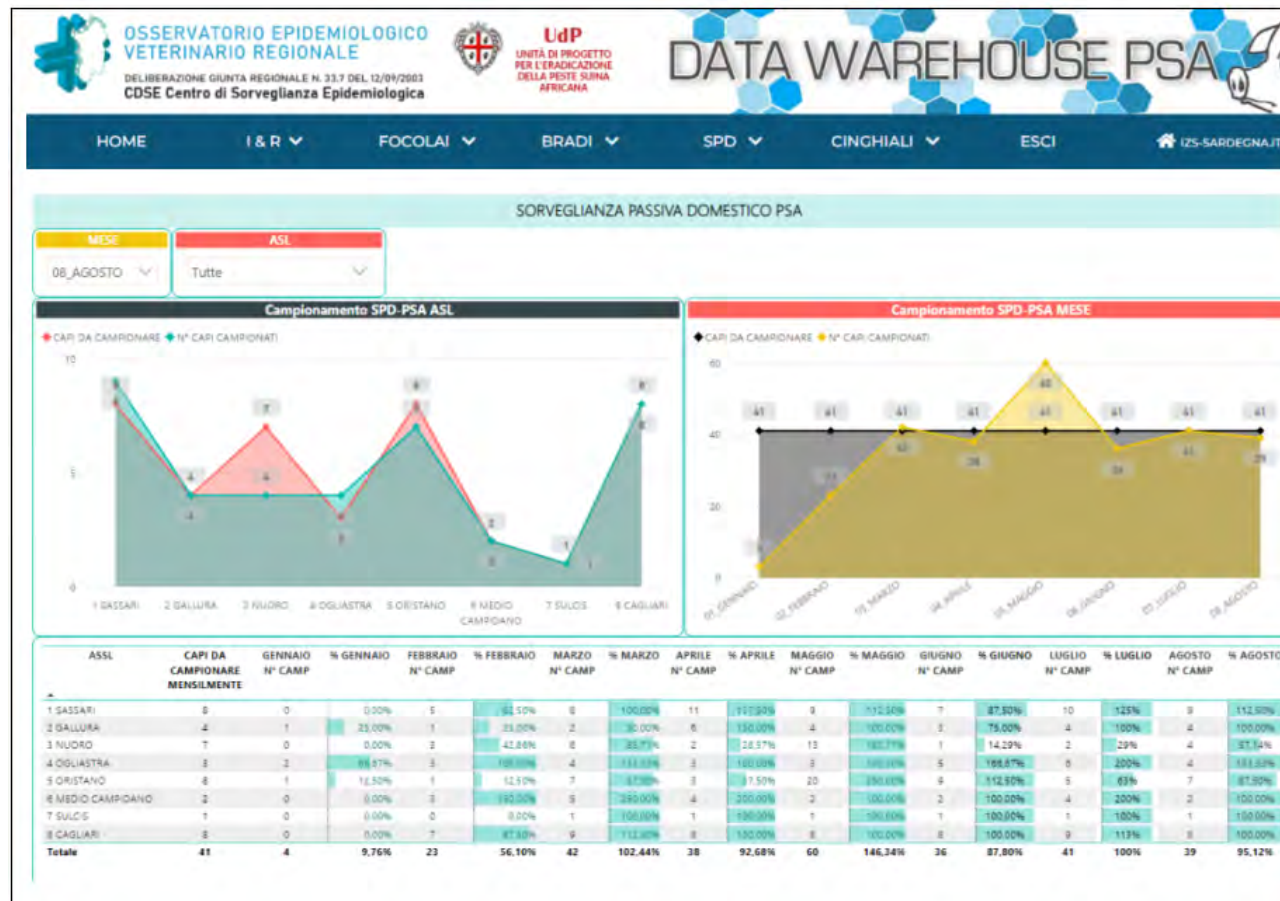


Recommendation 4 To ensure that passive surveillance covers and is representative for the entire kept porcine population and meets the objectives of early detection of the presence of ASF virus in this population.

The new procedure on passive surveillance in domestic pigs, developed in agreement with the CEREP, was adopted with UdP note prot. 77 del 09/02/2022 (Annex 2) and is included in the II provision of the Extraordinary ASF Eradication Program. The procedure is aimed at ensuring adequate and uniform passive surveillance all over the region. The procedure is based on a sample size representative of the expected dead pig population and equal to 41 died pigs/month, aimed at detecting a disease prevalence lower than 0.5% (confidence level 95%). This number is proportionally distributed by the eight ASLs based on the domestic pig farms density, as reported in Table 4:

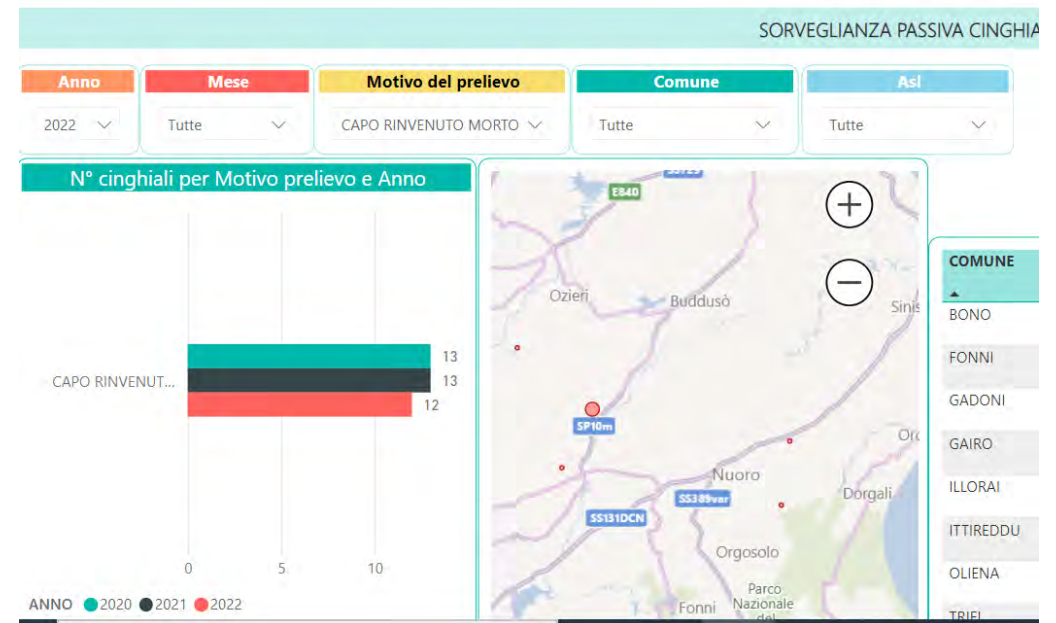
ASL	Monthly sample size
1 – Sassari	8
2 – Gallura	4
3 – Nuoro	7
4 – Ogliastra	3
5 – Oristano	8
6 – Medio Campidano	2
7 – Sulcis	1
8- Cagliari	8
Total	41

Updates: The compliance with the passive surveillance plan increases of 45% in February 2022 and reaches high values (about 90-100%) from March 2022, with similar compliance levels all over the region



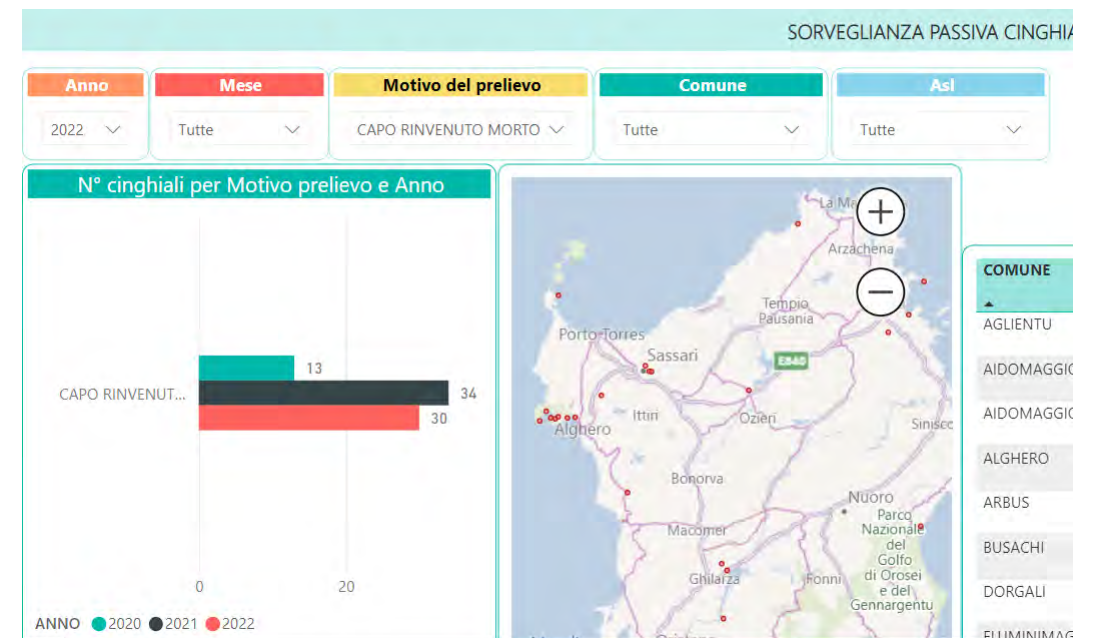
**Recommendation 5** *To ensure practical arrangements are put in place to increase the number of dead wild boar sampled and tested for ASF in order to make passive surveillance representative for the entire wild porcine population and meet the objectives of early detection of the presence of ASF virus in this population.*

Updates on infected area: From 2020, despite a total of 30 carcasses inside the infected area necessary to complete the ASF Exit strategy, 37 found dead wild boar were collected and ASF tested as negative. Totally, 13 carcasses (35%) were collected and tested during 2020 as well as in 2021, and 12 (30%) in 2022 (until the end of August). Furthermore, from 2020 a total of 383 wild boar killed by road traffic (or culled) inside the infected area were ASF tested as negatives.



# Updates on non-infected area

Outside the infected area the EFSA ASF Exit strategy could not be applied, thus a representative sampling was calculated. Considering the overall wild boar population equal to 68,000, an estimated yearly carcasses population equal to 3,450 wild boar naturally die outside the infected area. To obtain a representative sampling by passive surveillance, the 1% of these carcasses (35 died wild boar) should be found and tested for ASF every year. From 2020, outside the infected area a total of 75 found dead wild boar were collected and ASF tested as negative. Particularly, 13 (17%) in 2020, 34 (45%) in 2021 and 28 (37%) in 2022 (until the end of August). From 2020, a total of 1,016 wild boar killed by road traffic (or culled) outside the infected area were ASF tested as negatives, of which 272 (27%) in 2020, 448 (44%) in 2021 and 296 (29%) in 2022 (until the end of August). To date, the 28 carcasses found and tested as ASF negative during the 2022 would be enough to exclude an ASF prevalence lower than 9% in the carcasses with a confidence level of 95%. The final goal would be to find at least further 7 carcasses outside the infected area until the end of 2022





*Ministero della Salute*



Thanks for your kind attention