



**MINISTÈRE
DE L'AGRICULTURE
ET DE LA SOUVERAINETÉ
ALIMENTAIRE**

*Liberté
Égalité
Fraternité*

HIGHLY PATHOGENIC AVIAN INFLUENZA

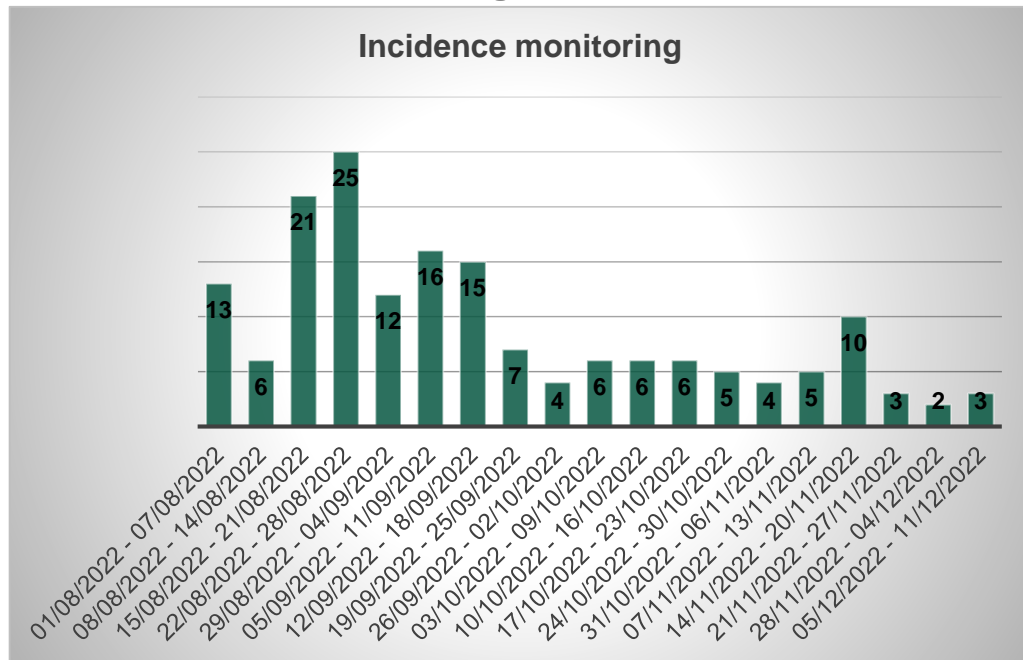
SITUATION IN FRANCE

SCoPAFF
December, 15 2022

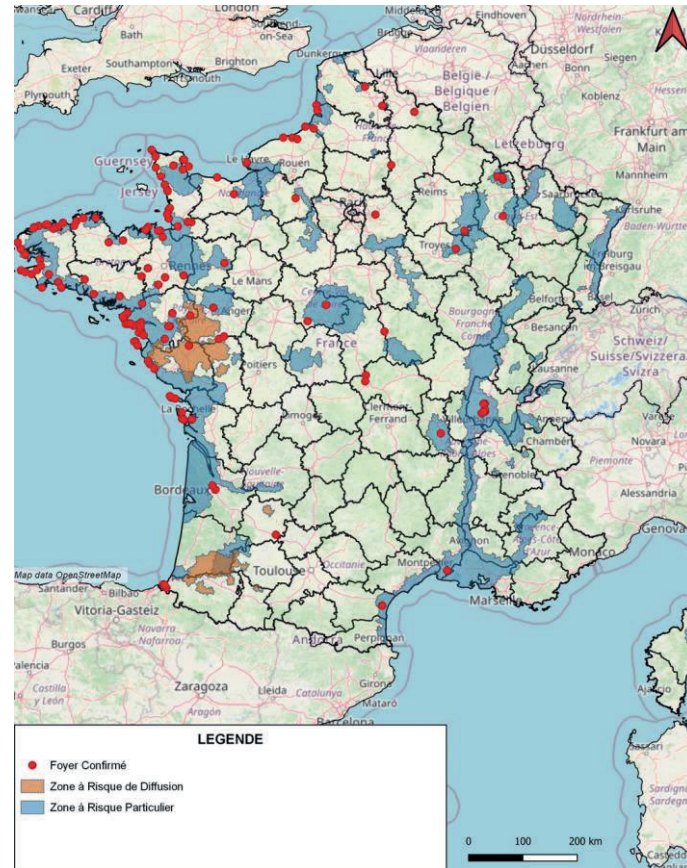
- **HPAI situation as of 13 December**
- **Phylogenetic analysis**
- **Prevention and Control measures**

HPAI in wildlife since 1 August 2022

169 cases since 1 August 2022*



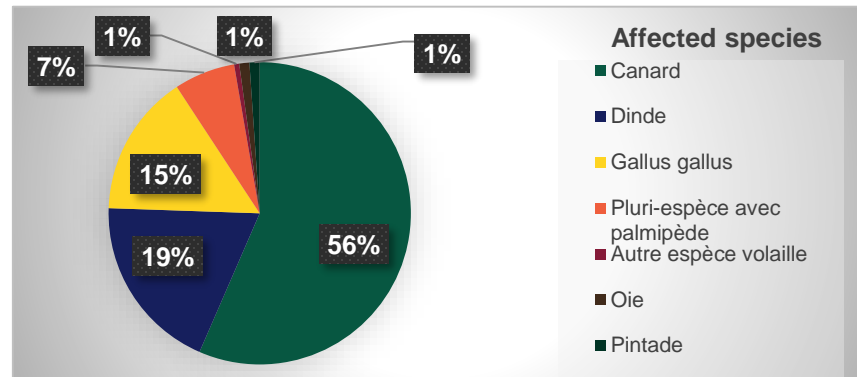
*As of 13 December 2022



HPAI in poultry since 1 August 2022

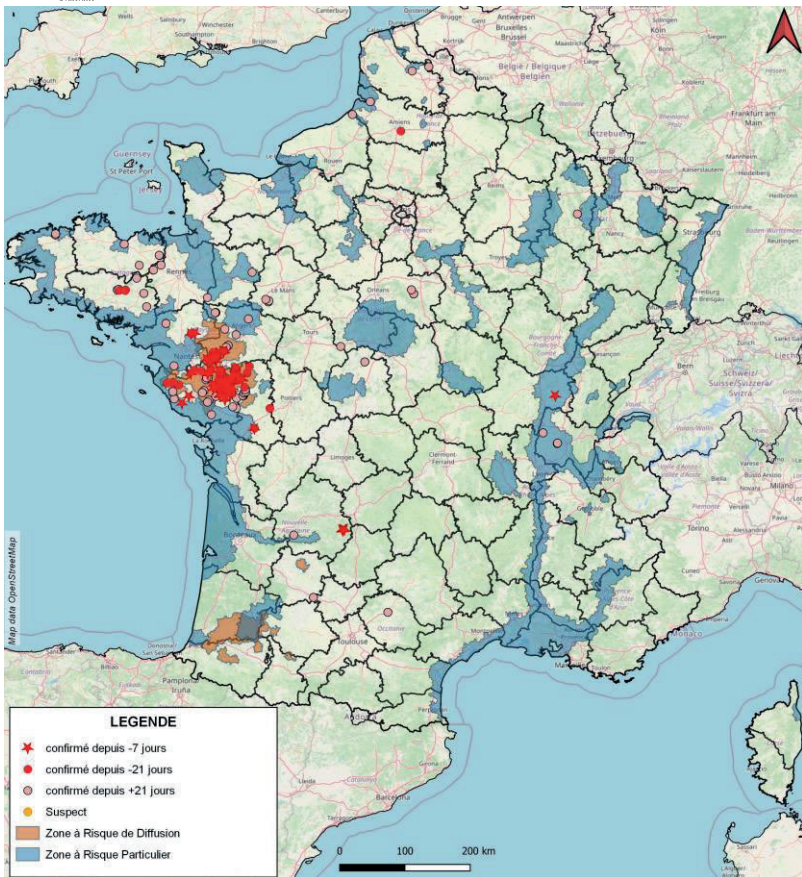
Poultry outbreaks since 1 August 2022 : 184

| French Regions | Number of outbreaks |
|-------------------------|---------------------|
| Auvergne-Rhône-Alpes | 3 |
| Bretagne | 17 |
| Centre-Val de Loire | 5 |
| Grand Est | 1 |
| Hauts-de-France | 6 |
| Île-de-France | 1 |
| La Réunion | 1 |
| Normandie | 2 |
| Nouvelle-Aquitaine | 35 |
| Occitanie | 1 |
| Pays de la Loire | 111 |
| Bourgogne-Franche-Comté | 1 |
| Total | 184 |

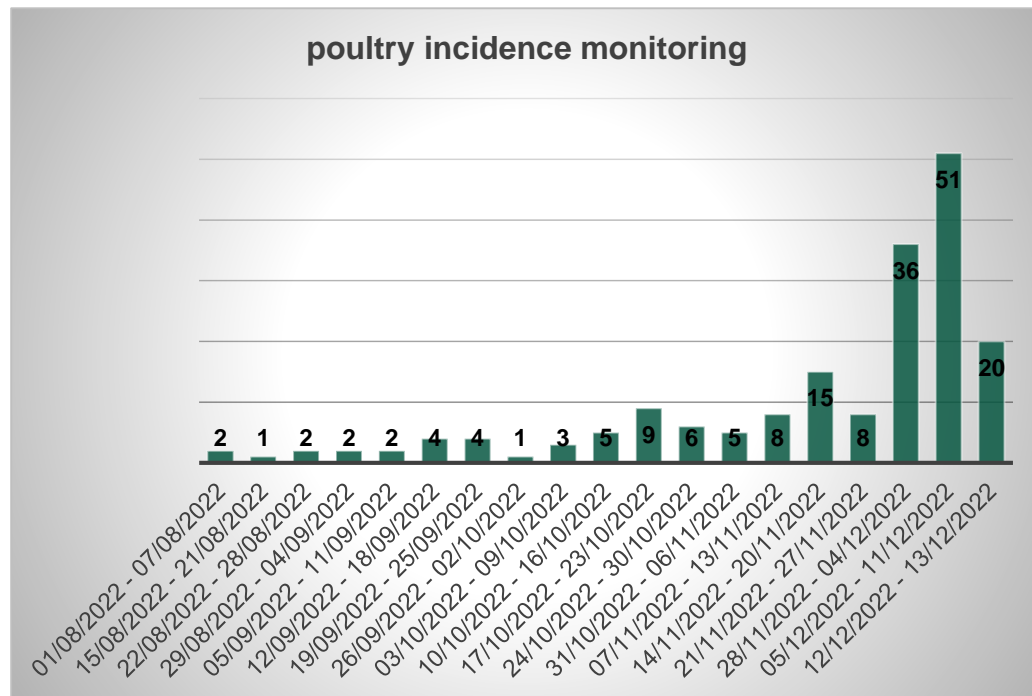


| Species | Number of outbreaks |
|---|---------------------|
| Canard (Duck) | 104 |
| Dinde (Turkey) | 35 |
| Gallus gallus | 28 |
| Pluri-espèce avec palmipède (Multispecies with palmipeds) | 12 |
| Autre espèce volaille (other poultry) | 1 |
| Oie (goose) | 2 |
| Pintade (guinea fowl) | 2 |
| Total | 184 |

HPAI in poultry since 1 August 2022



Direction Générale de l'Alimentation



La Réunion

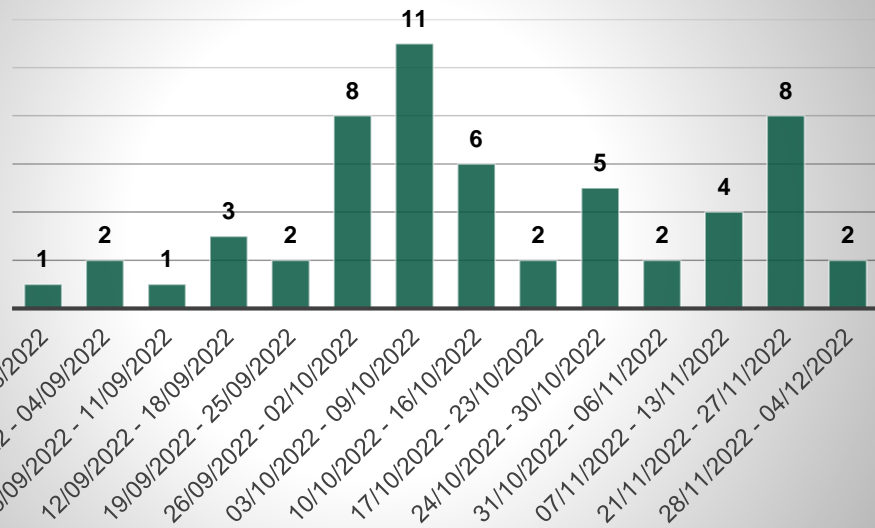


- Confirmed
- Areas at risk of HPAI introduction -Wetland areas (ZRP)
- Areas at risk of spreading (ZRD)

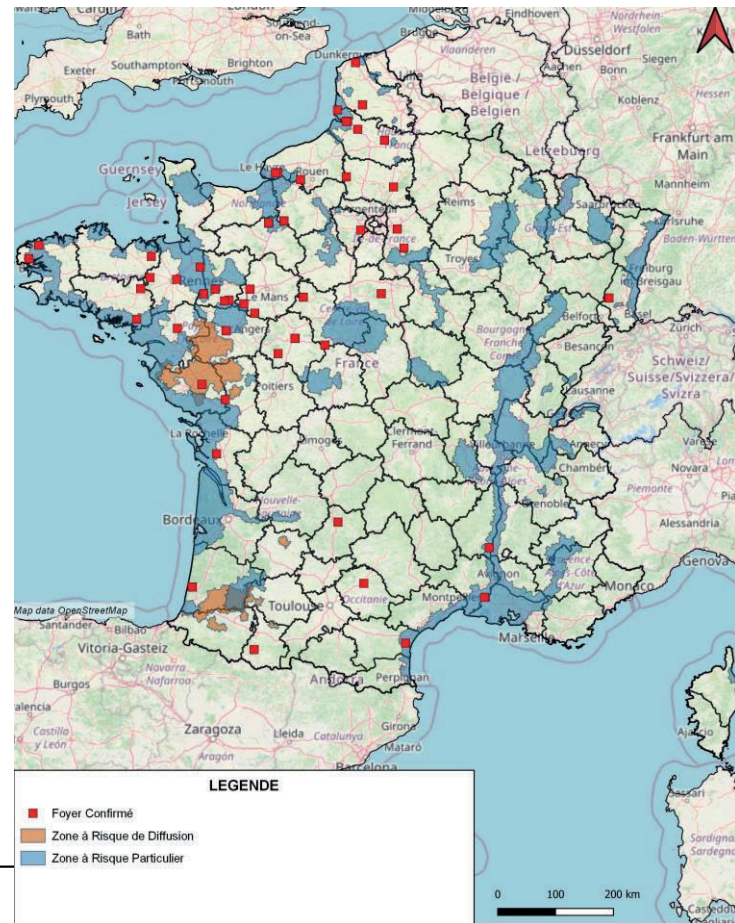
HPAI in captive birds since 1 August 2022

57 outbreaks since 1 August 2022*

non poultry incidence monitoring



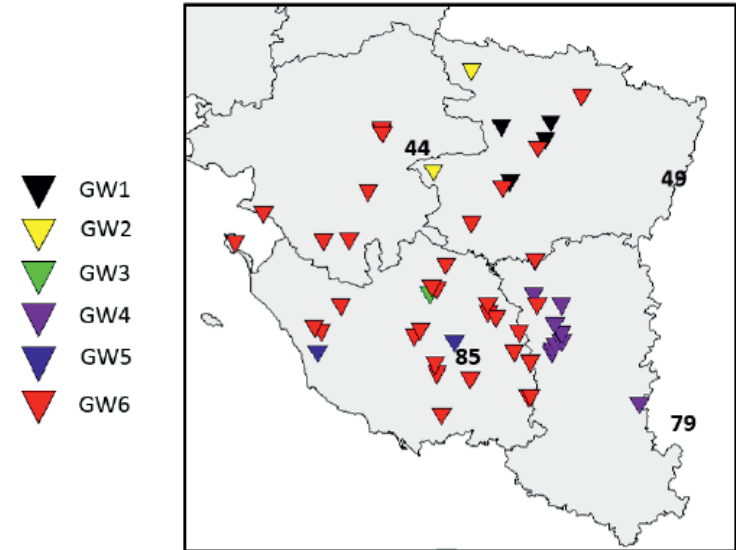
*As of 13 December 2022



Phylogenetic analysis

- A total of 11 genotypes defined in France (FR1 to FR11)
 - FR2 genotype detected many times (predominant in Europe)
- **The new epizootic wave is divided into two phases:**
- A first phase until week 47, during which numerous primary introductions were observed, which were quickly contained.
 - The second phase started in week 48 with a inter-farm diffusion of the disease (climatic conditions favoring the survival of the virus).

Distribution of FR2 phylogenetic clusters in West of France (source : ANSES)



Prevention measures : reinforcement on all French Territory since early November

National Decree of 08 November 2022 : HPAI High risk level

Strengthening of prevention measures throughout the territory:

- Sheltering of all kept birds
- Daily surveillance on holdings taking into account alert criteria

Measures in palmipeds sectors :

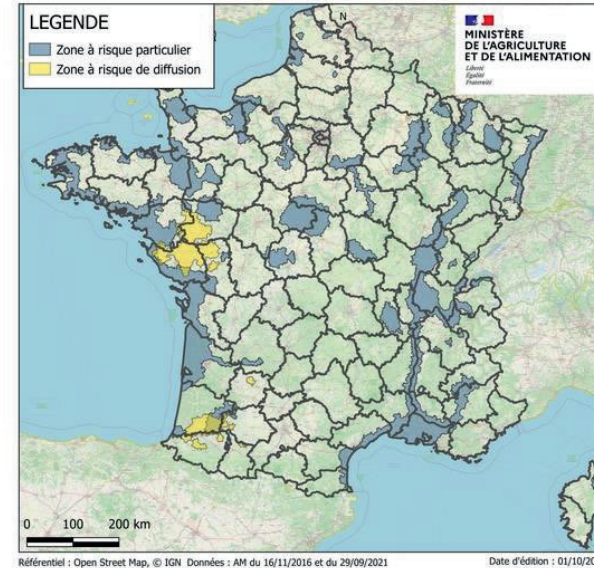
- Autocontrols before movements in risk areas
- Lowering palmipeds density in risk areas :
Reduction in the number of batches
(voluntary measure)

Risk areas

Areas at risk of HPAI introduction (ZRP) = wetland areas crossed by migration corridors

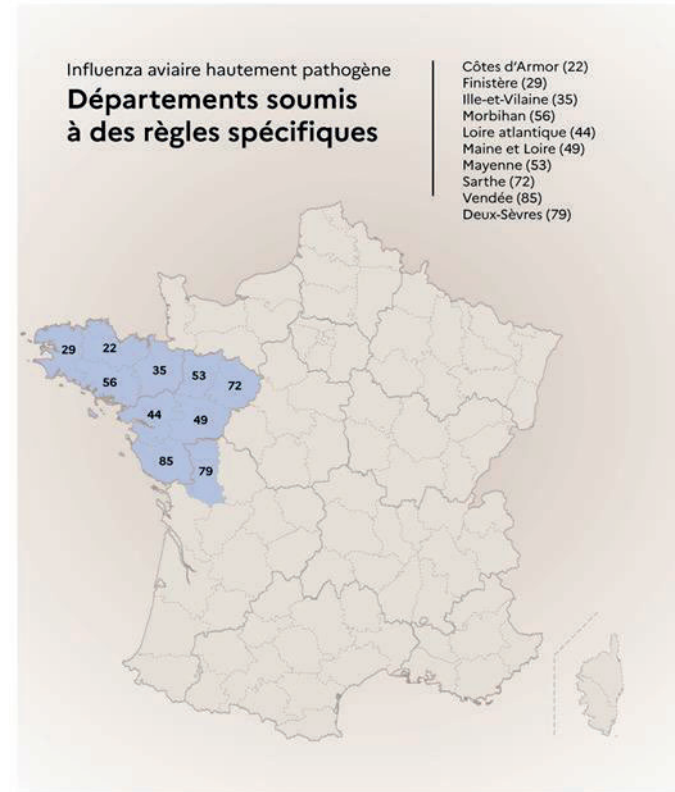
Areas at risk of spreading (ZRD) = high density areas

zones à risque particulier (ZRP) et à risque de diffusion (ZRD)



Control measures : reinforcement with a regional approach since October 2022

- **Extended restricted zone**, requiring enhanced active surveillance in farms and before movements for palmipeds.
- Control strategy taking into account the sanitary situation, the geography and the organisation of the sectors :
 - **General rules** : France, excluding Bretagne et Pays de la Loire regions.
 - **Specific regional rules** : Bretagne et Pays de la Loire regions (departements 22, 29, 35, 44, 49, 53, 56, 72, 79, 85)
 - **Specific local rules for clusters**: in departements 44, 49, 79, 85 (since 2 December)



General rules : France

- **Measures applied in infected zones (wild bird case)**
 - ✓ Radius : **minimum 20 km**
 - ✓ Active surveillance (autocontrols) in farms and before movements for palmipeds

- **Measures applied in restricted zones around poultry outbreaks**
 - ✓ Extended restricted zones : Protection zone (PZ), surveillance zone (SZ) and **further restricted zone (FRZ)**
 - ✓ Active surveillance (autocontrols) in palmipeds farms
 - ✓ **Preventive peri-focal depopulation within a radius of 3 km** if outbreak located in/near risk areas (ZRD)
 - ✓ **FRZ :**
 - Radius : 20 km around the outbreak
 - Intra-UE movement authorized in application of art 3 bis Decision 2021/641

Specific regional rules : Bretagne et Pays de la Loire

- **Extended infected zone (IZ)** on all territory of Bretagne and Pays de la Loire departments
 - ✓ Active surveillance in palmipeds farms (autocontrols)
 - ✓ Autocontrols before movements of palmipeds
 - ✓ Lowering density by extending the following by 3 weeks for all palmipeds farms in ZRD

- **If poultry outbreak : PZ (3 km) and SZ (10 km)** are superimposed to the IZ.
 - ✓ **Preventive peri-focal depopulation within a 10 km radius** if outbreak located in/near ZRD
 - ✓ **Lowering density** by prohibiting the re-stocking in all palmipeds and turkey farms for 3 weeks after the lifting of restricted zones

Specific local rules for clusters : Departments 44, 49, 79, 85

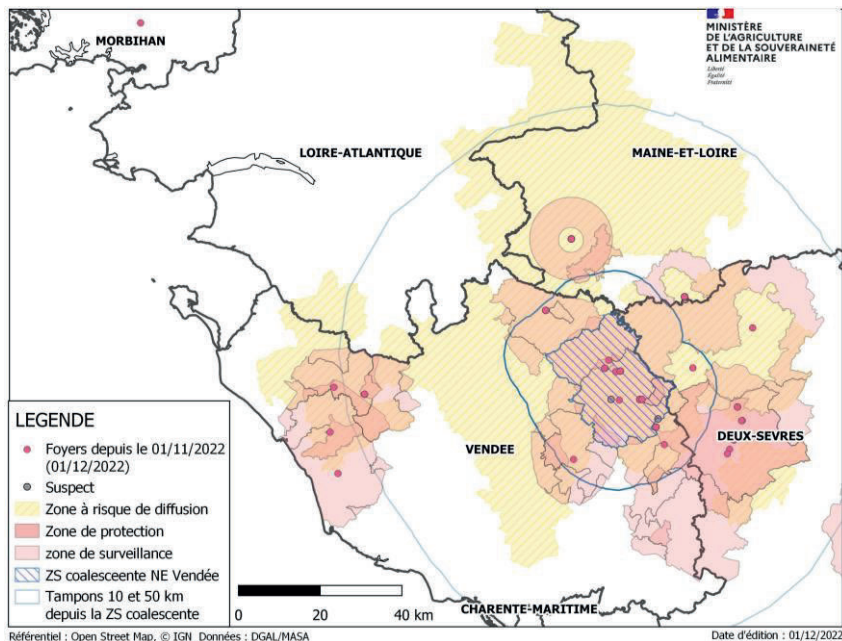
New restricted zones:

- **Further restricted zone (FRZ):**
 - Perimeter: 10km deep around coalescent SZ of the clusters
 - Objective: to de-densify very quickly around the cluster
 - by early slaughtering of valuable batches of palmipeds and turkeys
 - by prohibiting the placing of palmipeds and turkeys

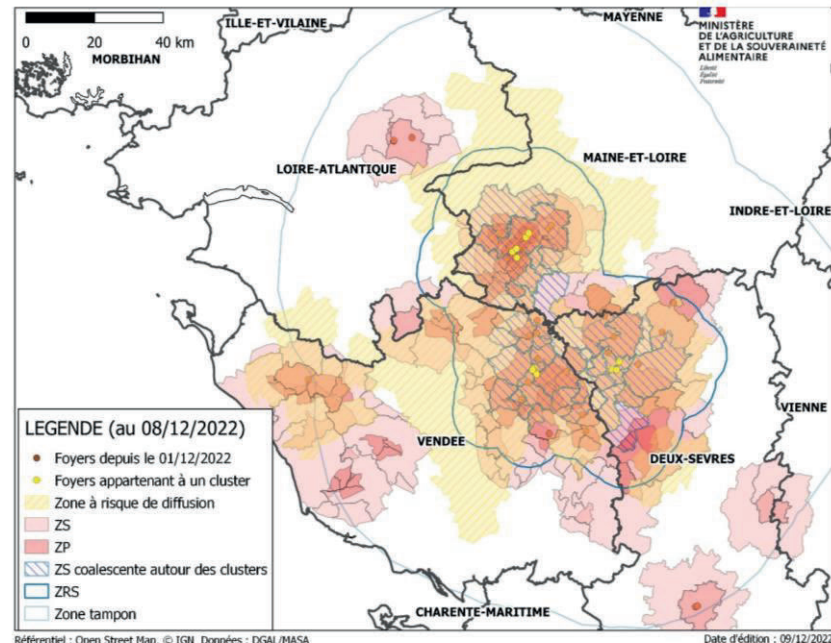
- **Buffer zone:**
 - Perimeter: Areas at risk of spreading (ZRD) up to 50 km around coalescent SZ of the clusters
 - Objective: to de-densify the ZRD in the medium term by prohibiting the placing of palmipeds and turkeys

Specific local rules for clusters : Departments 44, 49, 79, 85

The zoning is updated regularly according to the evolution of the sanitary situation.



Restricted zones on 02/12/2022



Restricted zones on 09/12/2022

Thank you for your attention

