



African swine fever in Lithuania (update of the situation)

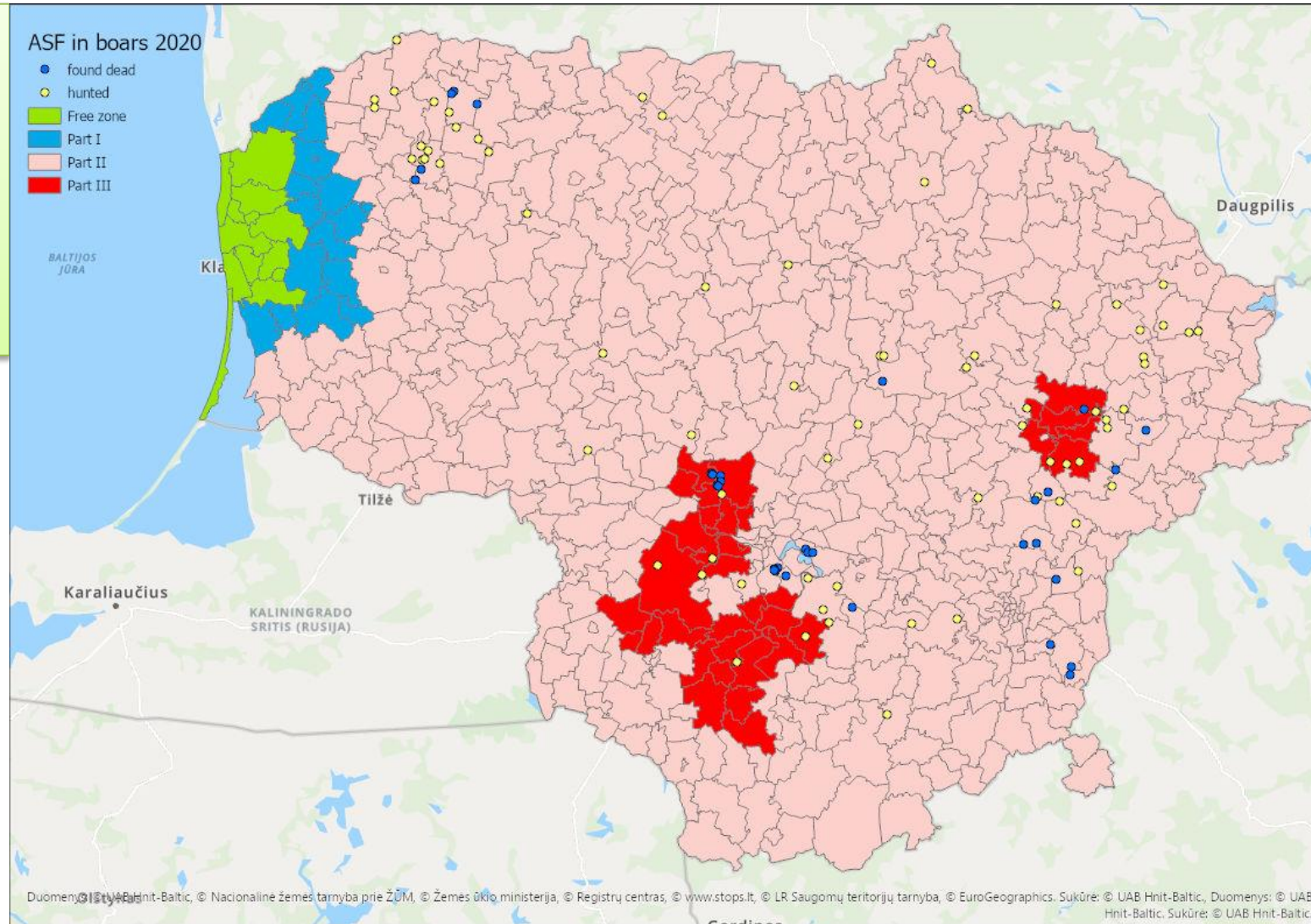
19 June 2020
State Food and Veterinary Service
Lithuania

ASF CASES IN WB 2020



111 places

- 55 dead WB
 - 83 hunted WB
- 138 WB affected

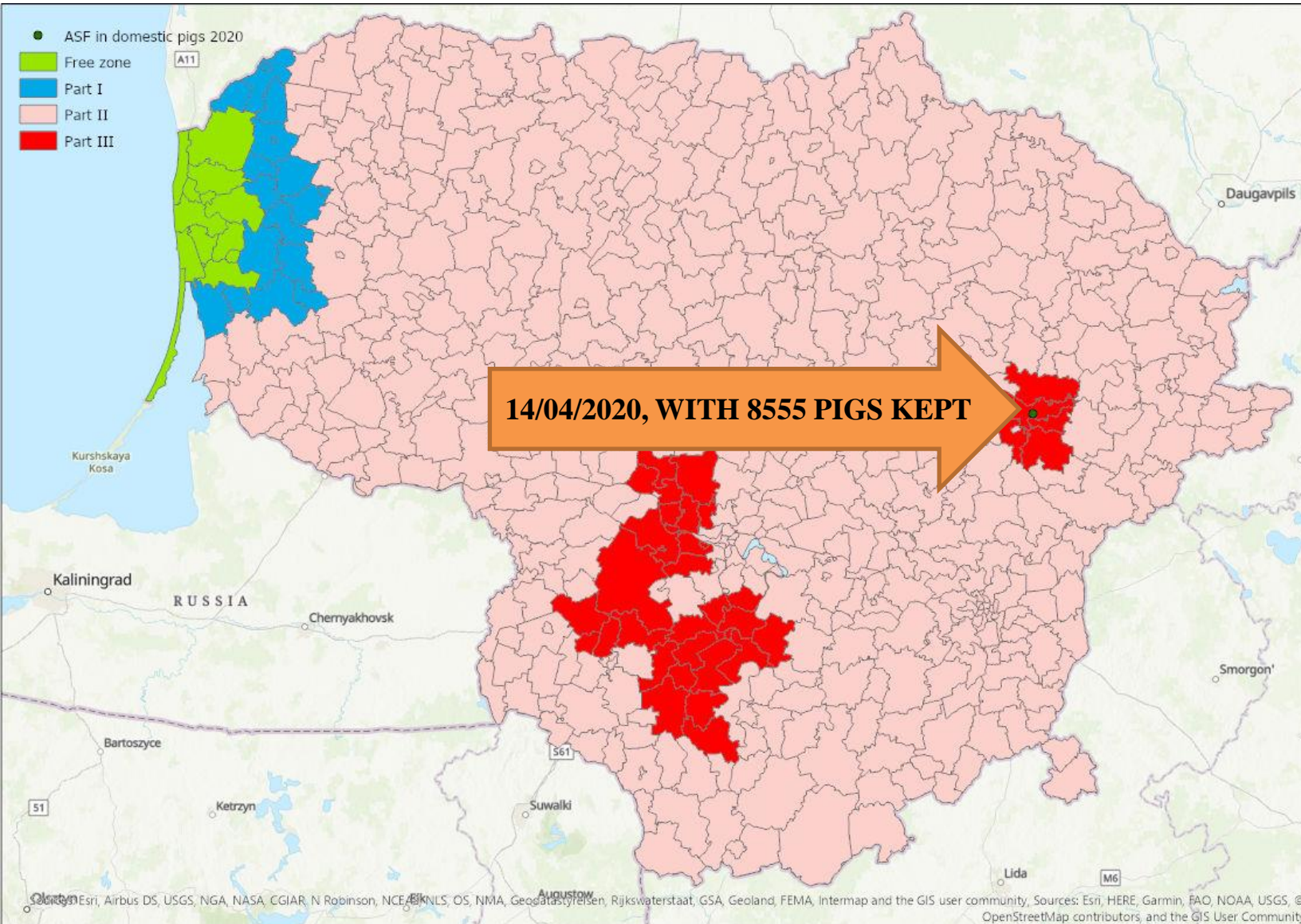


SURVEILLANCE IN WB



Surveillance	Number of samples	Positive
Passive (found dead) (PCR)	79	36
Active (PCR)	8541	33 + 62 (by IFA)
Total No of samples tested	8620	131

ASF outbreak in commercial farm (2020/1)



Epidemiological investigation



Outbreak in a restricted area listed in Part II

Samples of the dead pigs were delivered on the weakly basis in the framework of passive surveillance

3 pigs died, they were sampled and delivered to the ASF Reference Laboratory for testing

After few days 6 sows were found dead in the same stable, sampled and delivered for testing

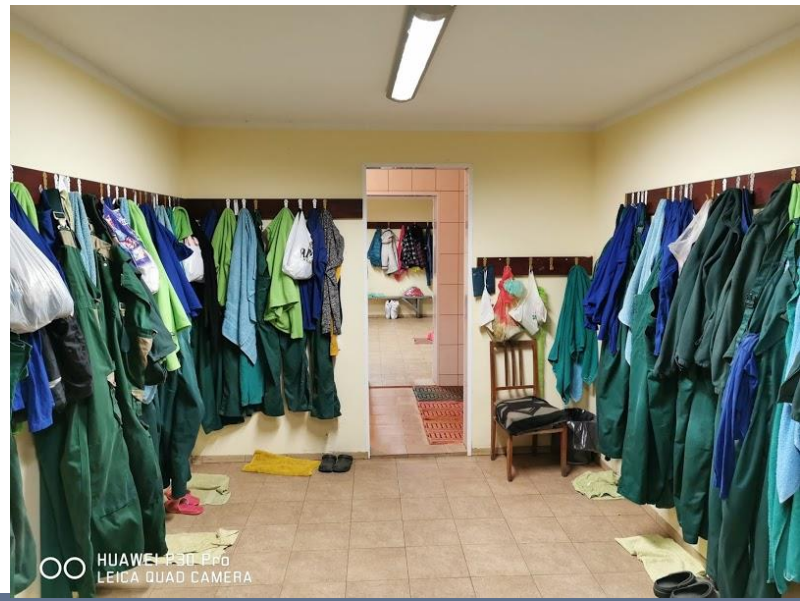
Epidemiological investigation



- Territory fenced
- Close cycle farm
- Comply with national biosecurity requirements



Epidemiological investigation



SURVEILLANCE IN DP



Surveillance	Number of samples	Positive
Passive (PCR)	1484	18 (dead pigs from outbreak)
Active (PCR)	257	0
Passive (IFA) (suspected holdings)	230	0



Valstybinė maisto ir veterinarijos tarnyba
Siesikų g. 15D, Vilnius

