



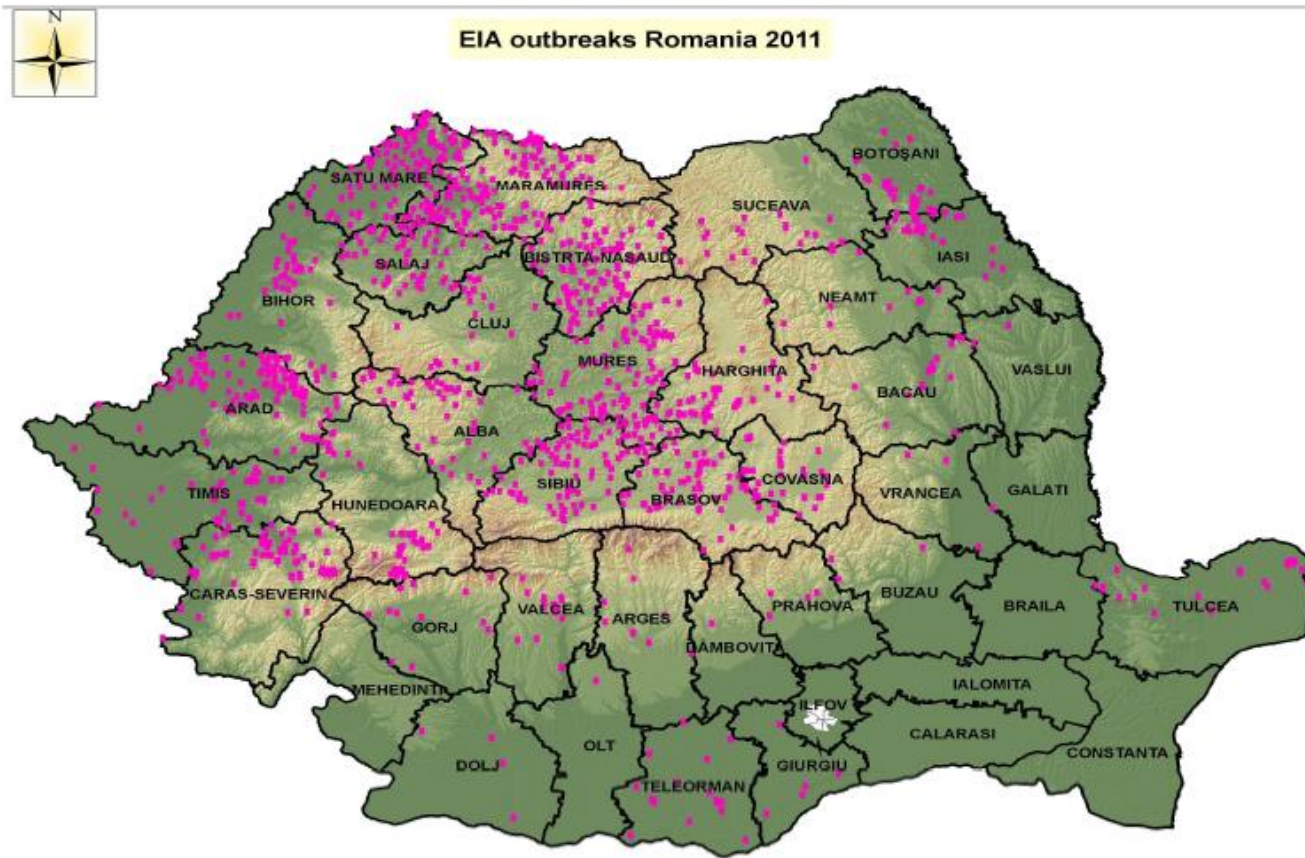
# **EIA**

# **Romania**

**Decision 2010/346/EU**

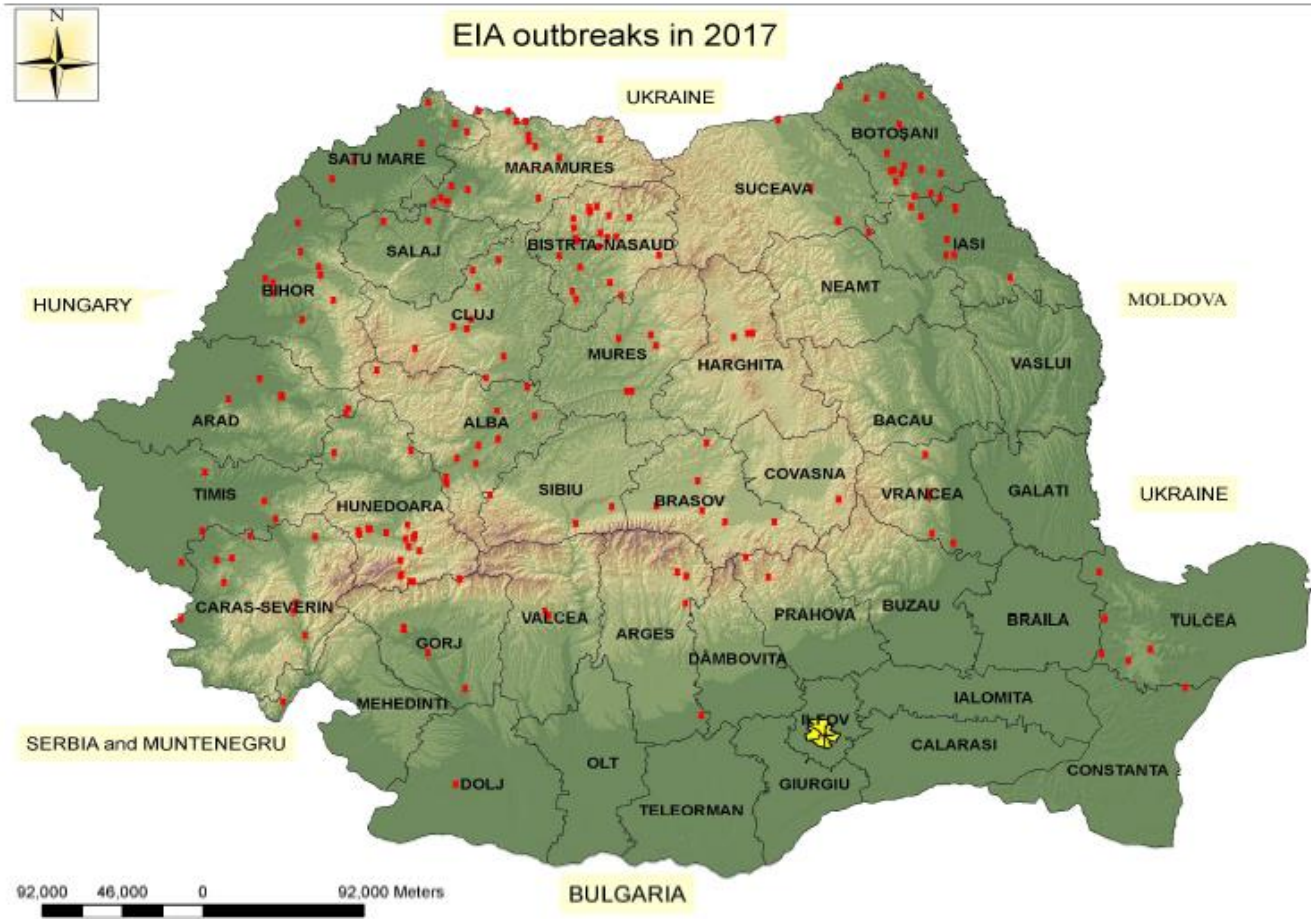
# EIA Romania 2011

Distribution of EIA outbreaks registered in 2011

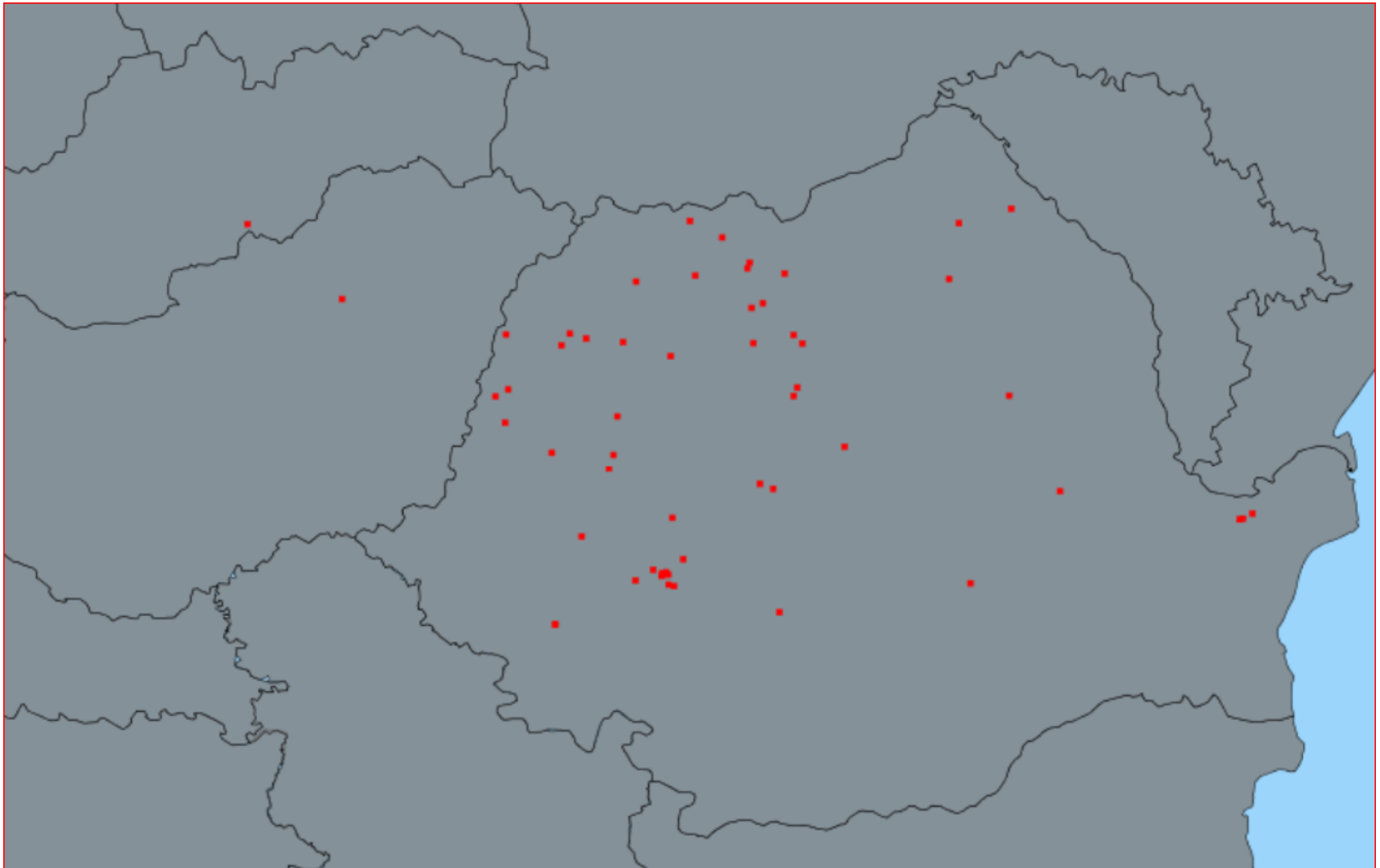


# EIA Romania 2017

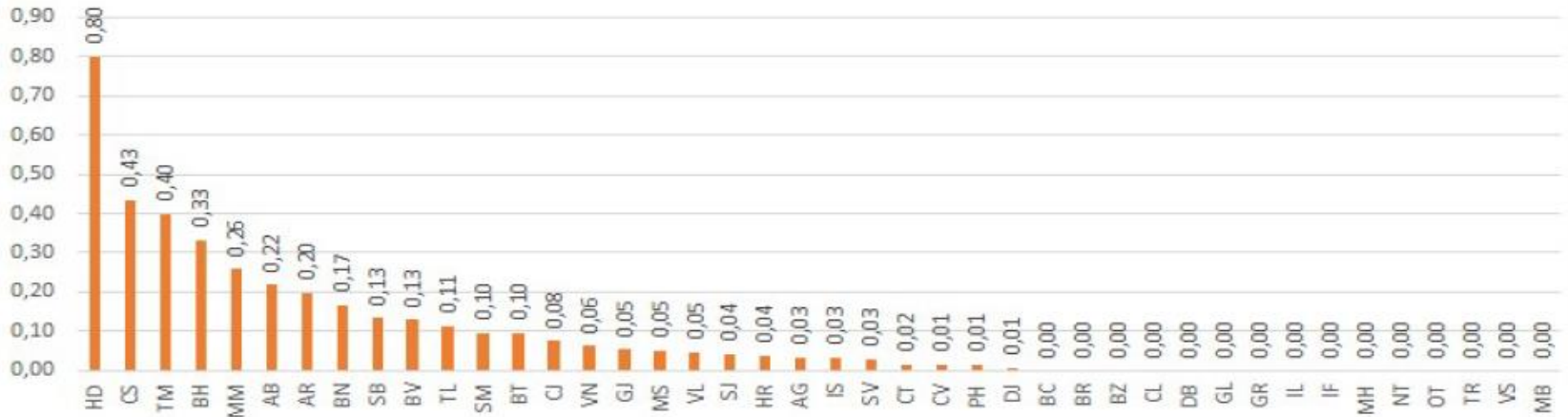
Distribution of EIA outbreaks registered in 2017



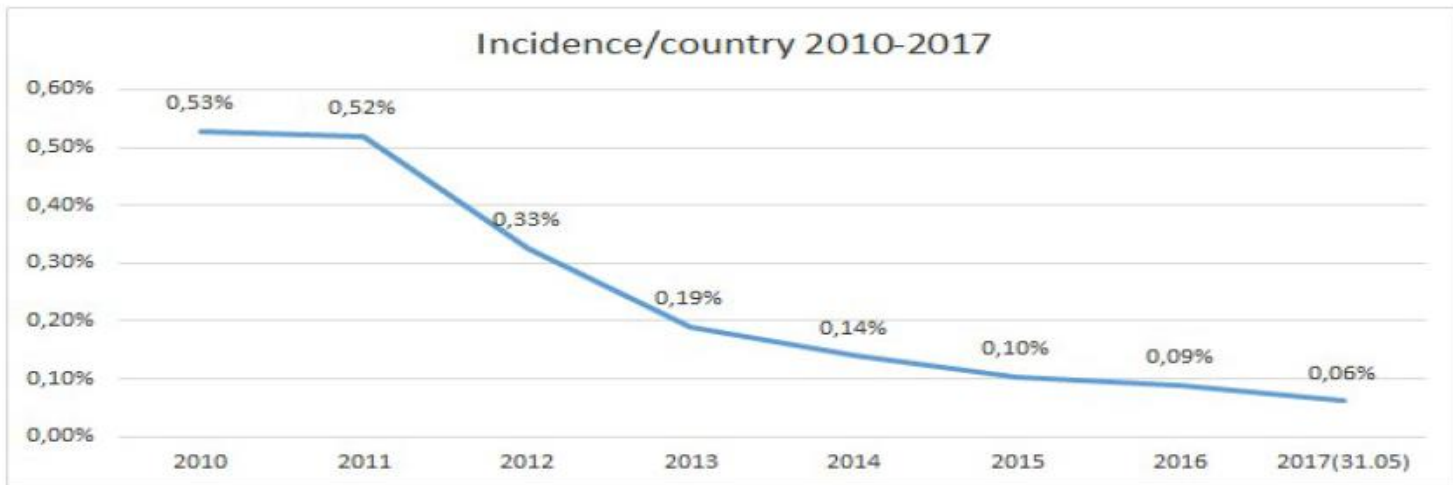
# EIA Romania 2018



Incidence 2017 (31.05.2017)



Incidence/country 2010-2017



# Decision 2010/346/EU – Article 1

1. Romania shall not **dispatch** the following commodities to other Member States:

(a) equidae from the regions listed in the Annex;

....

2. The prohibition laid down in paragraph 1(a) shall not apply to equidae from holdings situated outside Romania that either:

(a) transit through Romania on major routes and highways; or

(b) are transported through Romania directly and without any interruption to their journey to a slaughterhouse for immediate slaughter and are accompanied by an animal health certificate completed in accordance with the model set out in Annex

C to Directive 90/426/EEC.

**Note:** Romania has BIPs for equidae (Ukraine, Serbia)

# Decision 2010/346/EU – Article 3

*By way of derogation from Article 2(1)(a), (b), (c), (d) and (f), Romania may authorise the **dispatch to other Member States** of consignments of registered horses for participation in competitions organised under the auspices of the World Equestrian Federation (FEI), or in major international horse race events, subject to compliance with the following conditions:*

*(a) the horses must have undergone an **AGID test**, carried out with negative results in accordance with the criteria established by the Manual, on a blood sample taken within 10 days prior to the date of dispatch from the approved holding;*

*(b) **all equidae on the approved holding and within a perimeter of 200 m around the approved holding have undergone an AGID test** carried out with negative results on a blood sample taken between 90 and 180 days before the date of intended movement;*

*(c) the conditions laid down in Article 2(1)(e) and (g) [electronic transponder, Annex III certificate, TRACES].*